

A man with short brown hair and a light complexion is wearing a dark blue button-down shirt. He is looking slightly to the right of the camera with a neutral expression. The background is a soft-focus indoor setting with light-colored walls and some green foliage on the right side.

# *Woven Shirts*

**BARKERS<sup>®</sup>**  
CORPORATE

smpli<sup>™</sup>

 **standard**



# Contents

BROOKLYN	2	KINGSTON CHECK	30	REPUBLIC LONG SLEEVE	58
MADISON	4	HARTLEY CHECK	32	EVOLUTION	60
ORIGIN	6	BROADWAY CHECK	34	TRAVELLER	61
TYLER	8	FOLIO CHECK	36	MILANO	62
OUTLAND CHECK	10	CEDAR HILL CHECK	38	GRANGE	64
STAMFORD CHECK	12	SOHO CHECK	40	PROTOCOL	66
QUADRANT	14	BRETTON	42	MONTREAL CHAMBRAY	68
LYNDURST CHECK	16	END ON END	44	LIMITED TEFLON®	69
HUDSON CHECK	18	URBAN MINI RECTANGLE	46	REPUBLIC SHORT SLEEVE	70
FREMONT CHECK	20	WYNYARD STRIPE	48	OMEGA STRIPE	71
CLIFTON	22	EURO CORPORATE STRIPE	50	MATRIX TEFLON®	72
NORFOLK	24	RESTORE	52	COLOUR INDEX	74
IDENTITY CHECK	26	LINEN	54	SIZE SPECIFICATIONS	77
NEWPORT	28	EXPRESS TEFLON®	56		

Images from this catalogue cannot be reproduced without the written permission of the publisher, except by the owner or licensee of such names and logos. Whilst every effort is made to ensure the accuracy of colour representation in this catalogue, they should be used as a guide only. All embroidery and screenprinting shown is for indicative purposes only. Garments are supplied plain.



**BARKERS'**  
CORPORATE    **the standard**    **smpli™**

In today's competitive marketplace, quality & performance matter more than ever. Our range of woven shirts from The Standard, Barkers and Smpli brands harness exceptional value, everyday style and unsurpassed comfort offering clothes that aren't just about feeling good, but looking good for both the future and the now.





# Brooklyn

## BARKERS BROOKLYN SHIRT - MENS (BBR)

100% cotton mid-weight oxford | Tapered fit | Enzyme garment washed | Button down fashion collar with back collar button | Brown tortoiseshell look buttons | Mitred corner detail on cuffs | Single breast pocket | Striped contrast herringbone tape inside collar | Adjustable cuff and cuff link facility

Sizes:	S	M	L	XL	XXL	3XL	5XL
Neck circumference (cm):	40	41	42	43	45	47	51
½ chest (cm):	54	56.5	59	61.5	64	66.5	71.5

## BARKERS BROOKLYN SHIRT - WOMENS (WBBR)

100% cotton mid-weight oxford | Tapered fit | Enzyme garment washed | Fashion collar | Brown tortoiseshell look buttons | Long Sleeves | Striped contrast herringbone tape inside collar | Contoured hemline

Sizes:	8	10	12	14	16	18	20
½ chest (cm):	48	50.5	53	55.5	58	60.5	63

Colour: denim marl

**BARKERS'**  
CORPORATE





# Madison



## BARKERS MADISON SHIRT - MENS (BMA)

100% cotton mid-weight oxford | Tapered fit | Enzyme garment washed | Button down fashion collar with back collar button | Mitred corner detail on cuffs | Single breast pocket | Adjustable cuff and cuff link facility

Sizes:	S	M	L	XL	XXL	3XL	5XL
Neck circumference (cm):	40	41	42	43	45	47	51
½ chest (cm):	54	56.5	59	61.5	64	66.5	71.5

## BARKERS MADISON SHIRT - WOMENS (WBMA)

100% cotton mid-weight oxford | Tapered fit | Enzyme garment washed | Fashion collar | Long sleeves | Contoured hemline

Sizes:	8	10	12	14	16	18	20
½ chest (cm):	48	50.5	53	55.5	58	60.5	63

Colour: light blue

**BARKERS'**  
CORPORATE





# Origin

**BARKERS ORIGIN SHIRT - MENS (BOR)**

100% cotton twill | Tapered fit | Luxury liquid Ammonia finish for additional strength and luster | Fashion collar | Mitred corner detail on cuffs | Adjustable cuff and cuff link facility | Non-wrinkle resistant finish

Sizes:	S	M	L	XL	XXL	3XL	5XL
Neck circumference (cm):	40	41	42	43	45	47	51
½ chest (cm):	54	56.5	59	61.5	64	66.5	71.5

**BARKERS ORIGIN SHIRT - WOMENS (WBOR)**

100% cotton twill | Tapered fit | Luxury liquid Ammonia finish for additional strength and luster | Fashion collar | Long sleeves | Contoured hemline | Non-wrinkle resistant finish

Sizes:	8	10	12	14	16	18	20
½ chest (cm):	48	50.5	53	55.5	58	60.5	63

Colour: white







# Tyler

## BARKERS TYLER SHIRT - MENS (BTY)

100% cotton twill | Tapered fit | Luxury liquid Ammonia finish for additional strength and luster | Fashion collar | Mitred corner detail on cuffs | Adjustable cuff and cuff link facility | Non-wrinkle resistant finish

Sizes:	S	M	L	XL	XXL	3XL	5XL
Neck circumference (cm):	40	41	42	43	45	47	51
$\frac{1}{2}$ chest (cm):	54	56.5	59	61.5	64	66.5	71.5

## BARKERS TYLER SHIRT - WOMENS (WBTY)

100% cotton twill | Tapered fit | Luxury liquid Ammonia finish for additional strength and luster | Fashion collar | Long Sleeves | Contoured hemline | Non-wrinkle resistant finish

Sizes:	8	10	12	14	16	18	20
$\frac{1}{2}$ chest (cm):	48	50.5	53	55.5	58	60.5	63

Colour: black

**BARKERS<sup>®</sup>**  
CORPORATE







BARKERS OUTLAND CHECK SHIRT - MENS (BOC)							
100% cotton yarn dyed tattersall check   Tapered fit   Luxury liquid Ammonia finish for additional strength and luster   Fully combed fabric for a soft luxurious feel   Button down fashion collar with back collar button   Mitred corner detail on cuffs   Single breast pocket   Adjustable cuff and cuff link facility							
Sizes:	S	M	L	XL	XXL	3XL	5XL
Neck circumference (cm):	40	41	42	43	45	47	51
½ chest (cm):	54	56.5	59	61.5	64	66.5	71.5

BARKERS OUTLAND CHECK SHIRT - WOMENS (WBOC)							
100% cotton yarn dyed tattersall check   Tapered fit   Luxury liquid Ammonia finish for additional strength and luster   Fully combed fabric for a soft luxurious feel   V style open neck with fashion collar   Long sleeves   Contoured hemline							
Sizes:	8	10	12	14	16	18	20
½ chest (cm):	48	50.5	53	55.5	58	60.5	63
Colour: tan/black/ivory							



Outland





Stamford
Check

BARKERS STAMFORD CHECK SHIRT - MENS (BSC)

100% cotton yarn dyed tattersall check | Tapered fit | Luxury liquid Ammonia finish for additional strength and luster | Fashion collar | Mitred corner detail on cuffs | Adjustable cuff and cuff link facility | Contrast stitch detailing on selected buttons | Non-wrinkle resistant finish

Table with 2 rows and 8 columns: Sizes, Neck circumference (cm), 1/2 chest (cm), and size variants S, M, L, XL, XXL, 3XL, 5XL.

BARKERS STAMFORD CHECK SHIRT - WOMENS (WBSC)

100% cotton yarn dyed tattersall check | Tapered fit | Luxury liquid Ammonia finish for additional strength and luster | Fashion collar | Long sleeves | Contoured hemline | Contrast stitch detailing on selected buttons | Non-wrinkle resistant finish

Table with 2 rows and 7 columns: Sizes, 1/2 chest (cm), and size variants 8, 10, 12, 14, 16, 18, 20.

Colour: navy/blue/white





# Quadrant



## BARKERS QUADRANT SHIRT - MENS (BQU)

100% cotton yarn dyed houndstooth | Tapered fit | Luxury liquid Ammonia finish for additional strength and luster | Fashion collar | Mitred corner detail on cuffs | Adjustable cuff and cuff link facility | Contrast stitch detailing on selected buttons | Soil release | Wrinkle free

Sizes:	S	M	L	XL	XXL	3XL	5XL
Neck circumference (cm):	40	41	42	43	45	47	51
½ chest (cm):	54	56.5	59	61.5	64	66.5	71.5

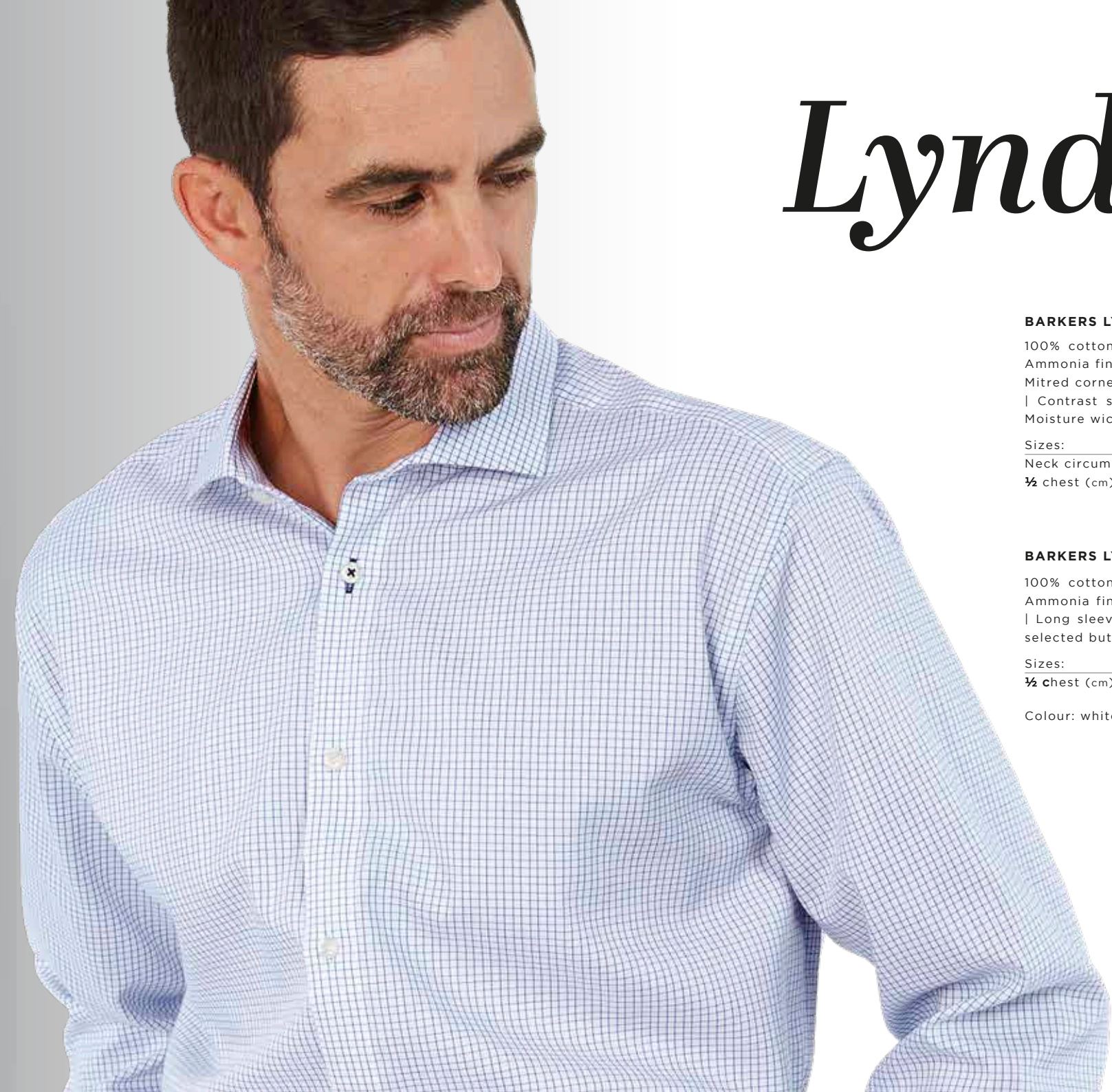
## BARKERS QUADRANT SHIRT - WOMENS (WBQU)

100% cotton yarn dyed houndstooth | Tapered fit | Luxury liquid Ammonia finish for additional strength and luster | Fashion collar | Long sleeves | Contoured hemline | Contrast stitch detailing on selected buttons | Soil release | Wrinkle free

Sizes:	8	10	12	14	16	18	20
½ chest (cm):	48	50.5	53	55.5	58	60.5	63

Colour: cobalt blue





# Lyndhurst

## BARKERS LYNDHURST CHECK SHIRT - MENS (BLC)

100% cotton yard dyed grid check | Tapered fit | Luxury liquid Ammonia finish for additional strength and luster | Fashion collar | Mitred corner detail on cuffs | Adjustable cuff and cuff link facility | Contrast stitch detailing on selected buttons | Quick drying | Moisture wicking | Wrinkle free

Sizes:	S	M	L	XL	XXL	3XL	5XL
Neck circumference (cm):	40	41	42	43	45	47	51
½ chest (cm):	54	56.5	59	61.5	64	66.5	71.5

## BARKERS LYNDHURST CHECK SHIRT - WOMENS (WBLC)

100% cotton yard dyed grid check | Tapered fit | Luxury liquid Ammonia finish for additional strength and luster | Fashion collar | Long sleeves | Contoured hemline | Contrast stitch detailing on selected buttons | Quick drying | Moisture wicking | Wrinkle free

Sizes:	8	10	12	14	16	18	20
½ chest (cm):	48	50.5	53	55.5	58	60.5	63

Colour: white/blue





# Hudson Check

## BARKERS HUDSON CHECK SHIRT - MENS (BHC)

100% cotton yarn dyed gingham check | Tapered fit | Luxury liquid Ammonia finish for additional strength and luster | Button down fashion collar with back collar button | Mitred corner detail on cuffs | Single breast pocket | Adjustable cuff and cuff link facility | Contrast stitch detailing on selected buttons | Non-wrinkle resistant finish

Sizes:	S	M	L	XL	XXL	3XL	5XL
Neck circumference (cm):	40	41	42	43	45	47	51
$\frac{1}{2}$ chest (cm):	54	56.5	59	61.5	64	66.5	71.5

## BARKERS HUDSON CHECK SHIRT - WOMENS (WBHC)

100% cotton yarn dyed gingham check | Tapered fit | Luxury liquid Ammonia finish for additional strength and luster | V style open neck with fashion collar | Long sleeves | Contoured hemline | Contrast stitch detailing on selected buttons | Non-wrinkle resistant finish

Sizes:	8	10	12	14	16	18	20
$\frac{1}{2}$ chest (cm):	48	50.5	53	55.5	58	60.5	63

Colour: sky blue/white



**BARKERS'**  
CORPORATE





# Fremont

## BARKERS FREMONT CHECK SHIRT - MENS (BFCS)

100% cotton yarn dyed check | Tapered fit | Luxury liquid Ammonia finish for additional strength and luster | Fashion collar | Mitred corner detail on cuffs | Striped contrast herringbone tape inside collar | Adjustable cuff and cuff link facility | Contrast stitch detailing on buttons | Non-wrinkle resistant finish

Sizes:	S	M	L	XL	XXL	3XL	5XL
Neck circumference (cm):	40	41	42	43	45	47	51
½ chest (cm):	54	56.5	59	61.5	64	66.5	71.5

## BARKERS FREMONT CHECK SHIRT - WOMENS (WBFCS)

100% cotton yarn dyed check | Tapered fit | Luxury liquid Ammonia finish for additional strength and luster | V style open neck with fashion collar | Long Sleeves | Striped contrast herringbone tape inside collar | Contoured hemline | Contrast stitch detailing on buttons | Non-wrinkle resistant finish

Sizes:	8	10	12	14	16	18	20
½ chest (cm):	48	50.5	53	55.5	58	60.5	63

Colour: navy/white

**BARKERS**  
CORPORATE







# Clifton

**BARKERS CLIFTON SHIRT - MENS (BCL)**

95% cotton, 5% spandex yarn dyed jacquard dobby | Tapered fit | Luxury liquid Ammonia finish for additional strength and luster | Button down fashion collar with back collar button | Mitred corner detail on cuffs | Single breast pocket | Adjustable cuff and cuff link facility | Contrast stitch detailing on selected buttons | Stain resistant | Wrinkle free

Sizes:	S	M	L	XL	XXL	3XL	5XL
Neck circumference (cm):	40	41	42	43	45	47	51
½ chest (cm):	54	56.5	59	61.5	64	66.5	71.5

**BARKERS CLIFTON SHIRT - WOMENS (WBCL)**

95% cotton, 5% spandex yarn dyed jacquard dobby | Tapered fit | Luxury liquid Ammonia finish for additional strength and luster | V style open neck with fashion collar | Long sleeves | Contoured hemline | Contrast stitch detailing on selected buttons | Stain resistant | Wrinkle free

Sizes:	8	10	12	14	16	18	20
½ chest (cm):	48	50.5	53	55.5	58	60.5	63

Colour: french blue

**BARKERS'**  
CORPORATE







# Norfolk

**BARKERS NORFOLK SHIRT - MENS (BNO)**

100% cotton yarn dyed houndstooth | Tapered fit | Luxury liquid Ammonia finish for additional strength and luster | Button down fashion collar with back collar button | Mitred corner detail on cuffs | Single breast pocket | Adjustable cuff and cufflink facility | Contrast stitch detailing on selected buttons | Non-wrinkle resistant finish

Sizes:	S	M	L	XL	XXL	3XL	5XL
Neck circumference (cm):	40	41	42	43	45	47	51
½ chest (cm):	54	56.5	59	61.5	64	66.5	71.5

**BARKERS NORFOLK SHIRT - WOMENS (WBNO)**

100% cotton yarn dyed houndstooth | Tapered fit | Luxury liquid Ammonia finish for additional strength and luster | V style open neck with fashion collar | Long sleeves | Contoured hemline | Contrast stitch detailing on selected buttons | Non-wrinkle resistant finish

Sizes:	8	10	12	14	16	18	20
½ chest (cm):	48	50.5	53	55.5	58	60.5	63

Colour: grey

**BARKERS'**  
CORPORATE







THE IDENTITY CHECK SHIRT - MENS (TIC)							
100% cotton yarn dyed jacquard dobby fashion check   Tapered fit   Fashion collar   Mitred corner detail on cuff   Adjustable cuff and cuff link facility							
Sizes:	S	M	L	XL	XXL	3XL	5XL
Neck circumference (cm):	40	41	42	43	45	47	51
½ chest (cm):	54	56.5	59	61.5	64	66.5	71.5
THE IDENTITY CHECK SHIRT - WOMENS (WTIC)							
100% cotton yarn dyed jacquard dobby fashion check   Tapered fit   Fashion collar   Long sleeves   Contoured hemline							
Sizes:	8	10	12	14	16	18	
½ chest (cm):	48	50.5	53	55.5	58	60.5	
Colour: french blue/white							

*Identity*





**THE NEWPORT SHIRT - MENS (TNP)**

100% cotton yarn dyed houndstooth | Tapered fit | Fashion collar | Mitred corner detail on cuffs | Adjustable cuff and cufflink facility | Contrast stitch detailing on selected buttons

Sizes:	S	M	L	XL	XXL	3XL	5XL
Neck circumference (cm):	40	41	42	43	45	47	51
½ chest (cm):	54	56.5	59	61.5	64	66.5	71.5

**THE NEWPORT SHIRT - WOMENS (WTNP)**

100% cotton yarn dyed houndstooth | Tapered fit | Fashion collar | Long sleeves | Shaped body detailing front and back | Contoured hemline | Contrast stitch detailing on selected buttons

Sizes:	8	10	12	14	16	18	20	22	24	26
½ chest (cm):	48	50.5	53	55.5	58	60.5	63	65.5	68	70.5

Colour: blue/white

*Newport*







# Kingston

**THE KINGSTON CHECK SHIRT - MENS (TKC)**

100% cotton yarn dyed gingham | Tapered fit | Fashion collar | Single breast pocket | Mitred corner detail on cuffs | Adjustable cuff and cufflink facility | Contrast stitching on buttons

Sizes:	S	M	L	XL	XXL	3XL	5XL
Neck circumference (cm):	40	41	42	43	45	47	51
½ chest (cm):	54	56.5	59	61.5	64	66.5	71.5

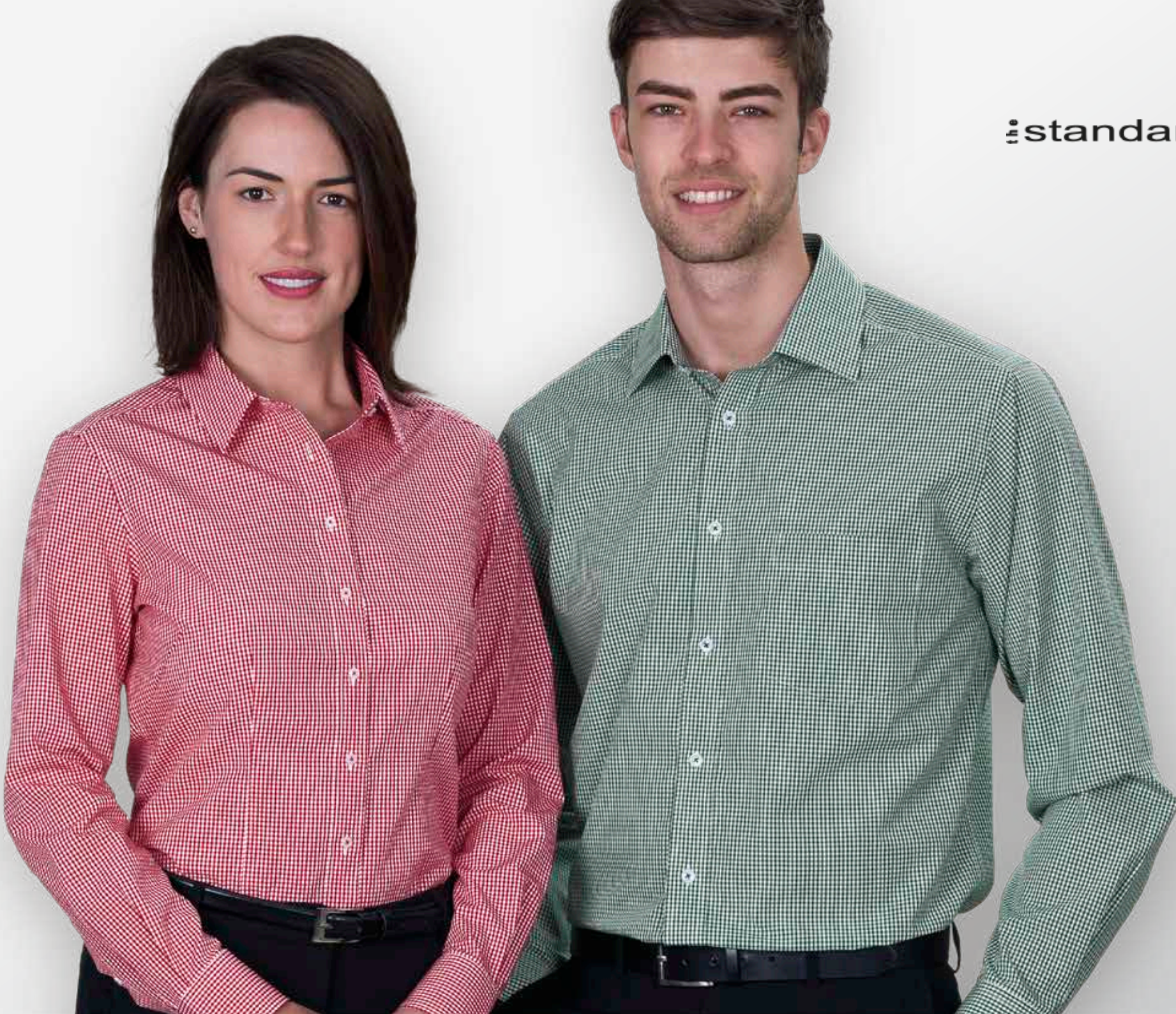
**THE KINGSTON CHECK SHIRT - WOMENS (WTKC)**

100% cotton yarn dyed gingham | Tapered fit | Fashion collar | Long sleeves | Shaped body detailing front and back | Contoured hemline | Contrast stitching on buttons

Sizes:	8	10	12	14	16	18	20	22	24	26
½ chest (cm):	48	50.5	53	55.5	58	60.5	63	65.5	68	70.5

Colours: black/white, red/white, green/white, navy/white

standard







**THE HARTLEY CHECK SHIRT - MENS (THC)**  
100% cotton yarn dyed fashion check | Tapered fit | Fashion collar  
| Mitred corner detail on cuffs | Stitching detail on collar edge and  
cuff edge | Single breast pocket

Sizes:	S	M	L	XL	XXL	3XL	5XL
Neck circumference (cm):	40	41	42	43	45	47	51
½ chest (cm):	54	56.5	59	61.5	64	66.5	71.5

**THE HARTLEY CHECK SHIRT - WOMENS (WTHC)**  
100% cotton yarn dyed fashion check | Tapered fit | V style open  
neck with fashion collar | Long sleeves | Contoured hemline

Sizes:	8	10	12	14	16	18	20	22	24	26
½ chest (cm):	48	50.5	53	55.5	58	60.5	63	65.5	68	70.5

Colours: navy/white, black/white



Hartley





**THE BROADWAY CHECK SHIRT - MENS (TBC)**

65% polyester 35% cotton yarn dyed mini check | Classic fit | Fashion collar | Mitred corner detail on cuffs | Single breast pocket

Sizes:	S	M	L	XL	XXL	3XL	5XL
Neck circumference (cm):	40	41	42	43	45	47	51
½ chest (cm):	56.5	59	61.5	64	66.5	69	74

**THE BROADWAY CHECK SHIRT - WOMENS (WTBC)**

65% polyester 35% cotton yarn dyed mini check | Tapered fit | Fashion collar | Long sleeves | Shaped body detailing front and back | Contoured hemline

Sizes:	8	10	12	14	16	18	20	22	24	26
½ chest (cm):	48	50.5	53	55.5	58	60.5	63	65.5	68	70.5

Colour: sky/white

 **standard**



*Broadway*



# Folio Check



 **standard**

**THE FOLIO CHECK SHIRT - MENS (TF)**

65% polyester 35% cotton yarn dyed check jacquard | Classic fit | Fashion collar | Single breast pocket

Sizes:	S	M	L	XL	XXL	3XL	5XL
Neck circumference (cm):	40	41	42	43	45	47	51
½ chest (cm):	56.5	59	61.5	64	66.5	69	74

**THE FOLIO CHECK SHIRT - WOMENS (WTF)**

65% polyester 35% cotton yarn dyed check jacquard | Tapered fit | Fashion collar | Shaped body detailing front and back | length sleeves | Contoured hemline

Sizes:	8	10	12	14	16	18	20	22	24	26
½ chest (cm):	48	50.5	53	55.5	58	60.5	63	65.5	68	70.5

Colours: white/navy, white/black







# Cedar Hill

## THE CEDAR HILL CHECK SHIRT - MENS (TCDH)

100% cotton yarn dyed Tattersall check | Tapered fit | Button down fashion collar with back collar button | Mitred corner detail on cuffs | Single breast pocket | Adjustable cuff and cuff link facility | Contrast stitch detailing on selected buttons

Sizes:	S	M	L	XL	XXL	3XL	5XL
Neck circumference (cm):	40	41	42	43	45	47	51
½ chest (cm):	54	56.5	59	61.5	64	66.5	71.5

## THE CEDAR HILL CHECK SHIRT - WOMENS (WTCDH)

100% cotton yarn dyed Tattersall check | Tapered fit | V style open neck with fashion collar | Long sleeves | Contoured hemline | Contrast stitch detailing on selected buttons

Sizes:	8	10	12	14	16	18	20	22	24	26
½ chest (cm):	48	50.5	53	55.5	58	60.5	63	65.5	68	70.5

Colour: white/navy/brown

 standard





**THE SOHO CHECK SHIRT - MENS (TSC)**

65% polyester 35% cotton yarn dyed gingham check | Classic fit |  
Fashion collar | Single breast pocket | French cuffs

Sizes:	S	M	L	XL	XXL	3XL	5XL
Neck circumference (cm):	40	41	42	43	45	47	51
$\frac{1}{2}$ chest (cm):	56.5	59	61.5	64	66.5	69	74

Colour: navy/white

**the standard**



# Soho Check





# Bretton

## THE BRETTON SHIRT - MENS (TBT)

65% polyester 35% cotton yarn dyed jacquard dobby | Tapered fit | Traditional button down collar | Mitred corner detail on cuffs | Adjustable cuff and cufflink facility | Contrast stitching on buttons

Sizes:	S	M	L	XL	XXL	3XL	5XL
Neck circumference (cm):	40	41	42	43	45	47	51
$\frac{1}{2}$ chest (cm):	54	56.5	59	61.5	64	66.5	71.5

## THE BRETTON SHIRT - WOMENS (WTBT)

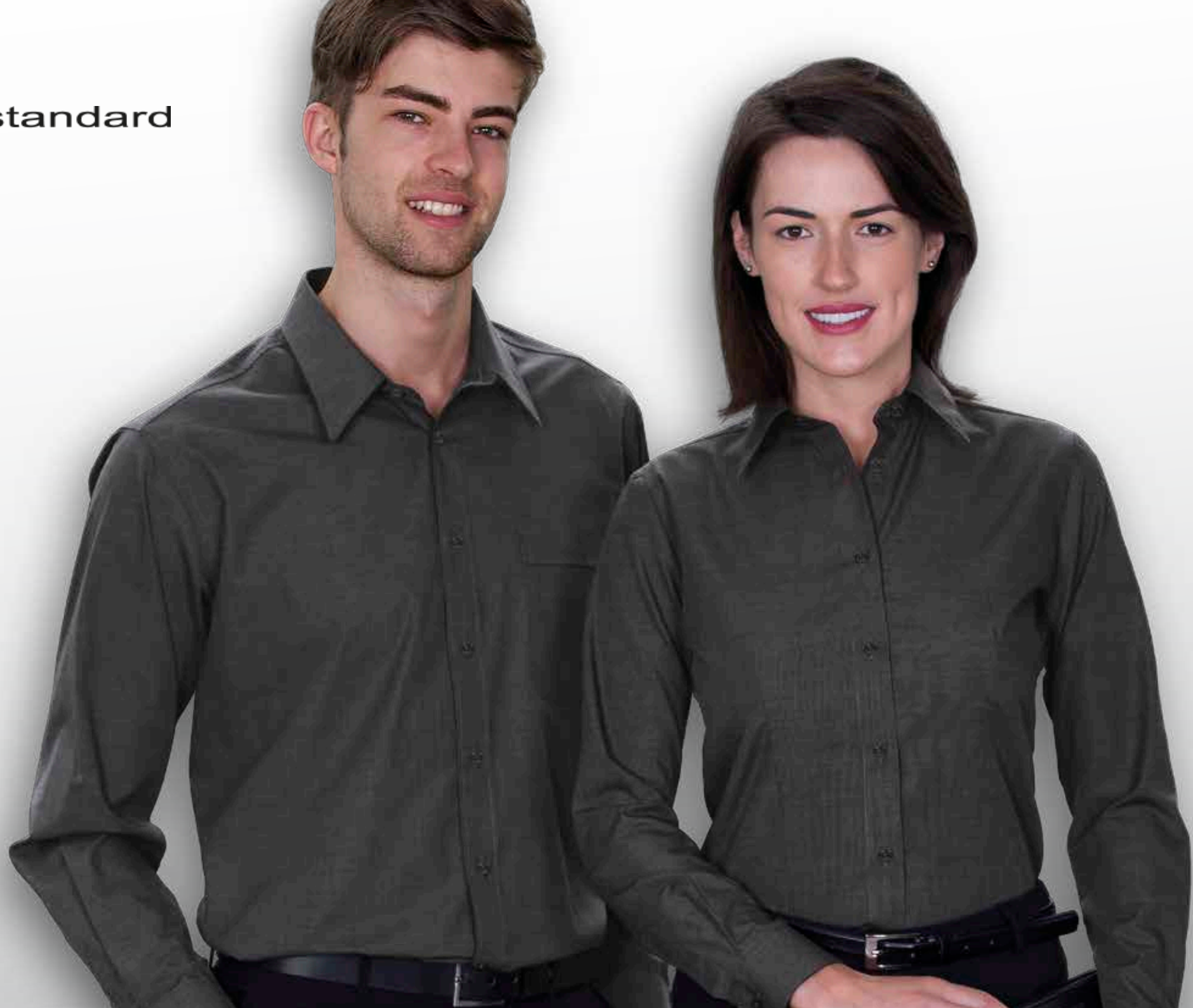
65% polyester 35% cotton yarn dyed jacquard dobby | Tapered fit | Fashion collar | Long sleeves | Shaped body detailing front and back | Contoured hemline | Contrast stitching on buttons

Sizes:	8	10	12	14	16	18	20	22	24	26
$\frac{1}{2}$ chest (cm):	48	50.5	53	55.5	58	60.5	63	65.5	68	70.5

Colour: steel navy

 **istandard**





# End On End

**THE END ON END SHIRT - MENS (EOE)**

65% polyester 35% cotton | Classic fit | Traditional collar | Single breast pocket

Sizes:	S	M	L	XL	XXL	3XL	5XL
Neck circumference (cm):	40	41	42	43	45	47	51
½ chest (cm):	56.5	59	61.5	64	66.5	69	74

**THE END ON END SHIRT - WOMENS (WEOE)**

65% polyester 35% cotton | Tapered fit | One piece collar | Shaped body detailing front and back | Long sleeves | Double buttoned cuffs | Contoured hemline

Sizes:	8	10	12	14	16	18	20	22
½ chest (cm):	47.5	50	52.5	55	57.5	60	62.5	65

Colours: french blue, charcoal







# Urban

**THE URBAN MINI RECTANGLE SHIRT - MENS (TU)**

65% polyester 35% cotton square weave jacquard | Classic fit | Fashion collar | Single breast pocket

Sizes:	S	M	L	XL	XXL	3XL	5XL
Neck circumference (cm):	40	41	42	43	45	47	51
½ chest (cm):	56.5	59	61.5	64	66.5	69	74

**THE URBAN MINI RECTANGLE SHIRT - WOMENS (WTU)**

65% polyester 35% cotton square weave jacquard | Classic fit | Fashion collar | Shaped body detailing front and back | ¾ length sleeves | Contoured hemline

Sizes:	8	10	12	14	16	18	20	22
½ chest (cm):	47.5	50	52.5	55	57.5	60	62.5	65

Colours: blue/white, silver/white







# Wynyard

## THE WYNYARD STRIPE SHIRT - MENS (TWS)

62% polyester 35% cotton, 3% Lycra® yarn dyed stripe | 100% cotton gingham contrast inside back yoke, cuffs and collar stand | Classic fit | Fashion collar | Mitred corner detail on cuffs | Single breast pocket | Contrast stitch detailing on selected buttons | Adjustable cuff and cufflink facility

Sizes:	S	M	L	XL	XXL	3XL	5XL
Neck circumference (cm):	40	41	42	43	45	47	51
½ chest (cm):	56.5	59	61.5	64	66.5	69	74

## THE WYNYARD STRIPE SHIRT - WOMENS (WTWS)

62% polyester 35% cotton, 3% Lycra® yarn dyed stripe | 100% cotton gingham contrast inside back yoke, cuff and collar stand | Tapered fit | Fashion collar | Long sleeves | Shaped body detailing front and back | Contoured hemline | Contrast stitch detailing on selected buttons

Sizes:	8	10	12	14	16	18	20	22	24	26
½ chest (cm):	45.5	48	50.5	53	55.5	58	60.5	63	65.5	68

Colour: black/white





**THE EURO CORPORATE STRIPE SHIRT - MENS (ES)**

65% polyester 35% cotton yarn dyed stripe | Classic fit | Fashion collar | Single breast pocket

Sizes:	S	M	L	XL	XXL	3XL	4XL
Neck circumference (cm):	40	41	42	43	45	47	49
½ chest (cm):	56.5	59	61.5	64	66.5	69	71.5

Colour: grey/white

**THE EURO CORPORATE STRIPE SHIRT - WOMENS (WES)**

65% polyester 35% cotton yarn dyed stripe | Classic fit | One piece collar | Shaped front and back | Long sleeves | Double buttoned cuffs | Contoured hemline

Sizes:	8	10	12	14	16	18	20	22
½ chest (cm):	47.5	50	52.5	55	57.5	60	62.5	65

Colours: grey/white, blue/white

**the standard**



# Euro Corporate







# Restore

## RESTORE SHIRT - MENS (SIR)

100% cotton | Garment washed | Tapered fit | Button down fashion collar | Long sleeves with buttoned cuffs | Single chest pocket | Back collar button | smpli™ plaquet label

Sizes:	S	M	L	XL	XXL	3XL	5XL
Neck circumference (cm):	40	41	42	43	45	47	51
½ chest (cm):	54	56.5	59	61.5	64	66.5	71.5

## RESTORE SHIRT - WOMENS (WSIR)

100% cotton | Garment washed | Casual fit | Fashion collar | Long sleeves with buttoned cuffs | Single chest pocket | Contoured hemline | smpli™ plaquet label

Sizes:	8	10	12	14	16	18	20	22	24	26
½ chest (cm):	49.5	52	54.5	57	59.5	62	64.5	67	69.5	72

Colours: white, black, navy

smpli™





# Linen



**LINEN SHIRT - MENS (SIL)**

100% linen | Garment washed | Tapered fit | Button down fashion collar | Long sleeves with buttoned cuffs | single chest pocket | back collar button | triple stitch detailing | smpli™ plaquet label

Sizes:	S	M	L	XL	XXL	3XL	5XL
Neck circumference (cm):	40	41	42	43	45	47	51
½ chest (cm):	54	56.5	59	61.5	64	66.5	71.5

**LINEN SHIRT - WOMENS (WSIL)**

100% linen | Garment washed | Casual fit | Long sleeves with buttoned cuffs | single chest pocket | Contoured hemline | twin stitch detailing | smpli™ plaquet label

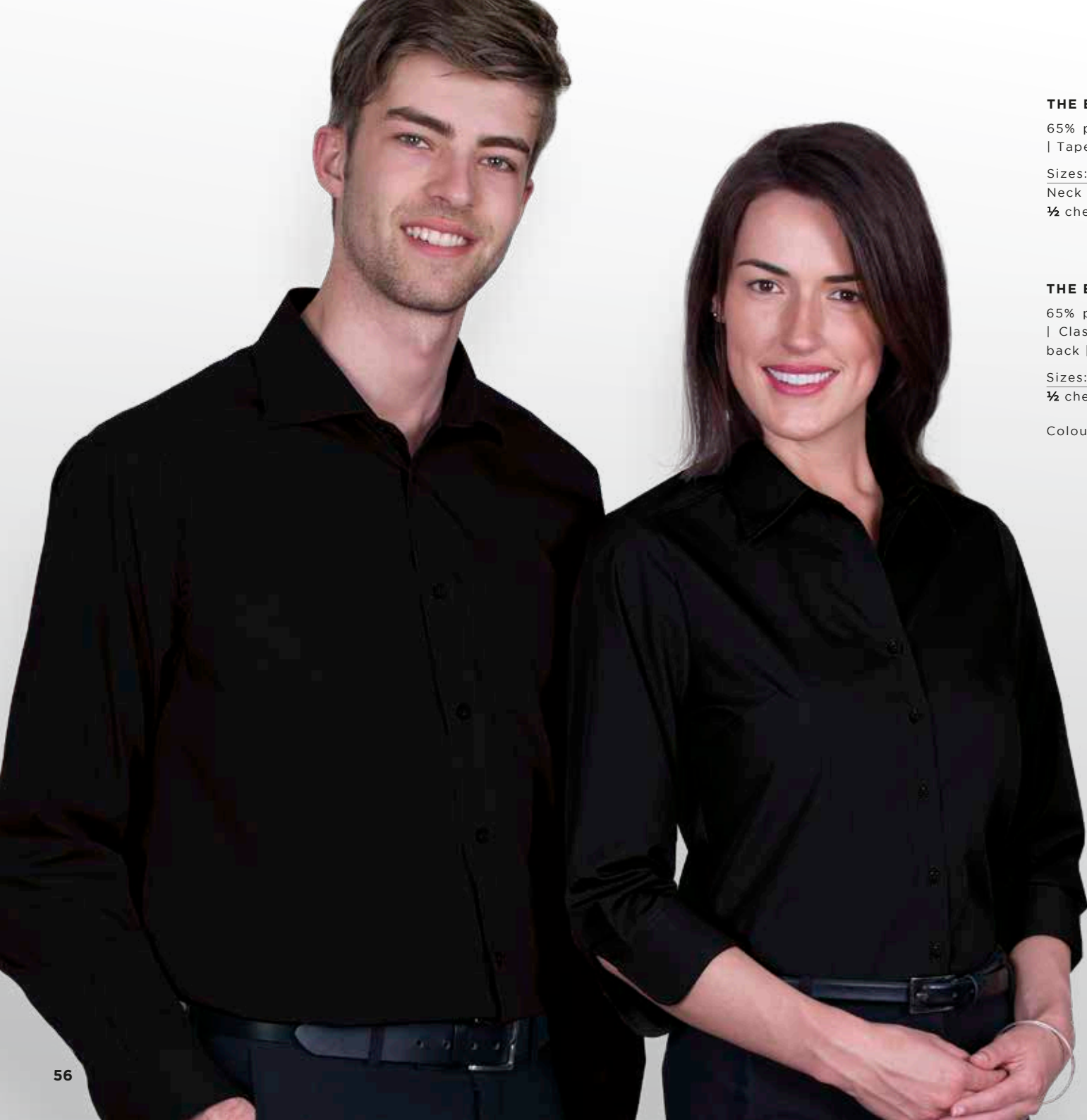
Sizes:	8	10	12	14	16	18	20	22	24	26
½ chest (cm):	49.5	52	54.5	57	59.5	62	64.5	67	69.5	72

Colour: white

smpli™







**THE EXPRESS TEFLON® SHIRT - MENS (TE)**

65% polyester 35% cotton poplin treated with DuPont™ Teflon®  
| Tapered fit | Fashion collar | Single breast pocket

Sizes:	S	M	L	XL	XXL	3XL	5XL
Neck circumference (cm):	40	41	42	43	45	47	51
¾ chest (cm):	54	56.5	59	61.5	64	66.5	71.5

**THE EXPRESS TELFON® SHIRT - WOMENS (WTE)**

65% polyester 35% cotton poplin treated with DuPont™ Teflon®  
| Classic fit | Fashion collar | Shaped body detailing front and back | ¾ length sleeves | Contoured hemline

Sizes:	8	10	12	14	16	18	20	22
¾ chest (cm):	47.5	50	52.5	55	57.5	60	62.5	65

Colours: white, black



Repels water  
& oil based spills

**the standard**



*Express Teflon*





# Republic Long Sleeve

## THE REPUBLIC LONG SLEEVE SHIRT - MENS (TRLS)

65% polyester 35% cotton bias stripe twill yarn dyed | Tapered fit | Casual fashion collar | Single breast pocket

Sizes:	S	M	L	XL	XXL	3XL	5XL
Neck circumference (cm):	40	41	42	43	45	47	51
½ chest (cm):	54	56.5	59	61.5	64	66.5	71.5

Colours: black, white

## THE REPUBLIC LONG SLEEVE SHIRT - WOMENS (WTRL5)

65% polyester 35% cotton bias stripe twill yarn dyed | Tapered fit | Casual fashion collar | Shaped body detailing front and back | Single button cuffs | Contoured hemline

Sizes:	8	10	12	14	16	18	20	22
½ chest (cm):	47.5	50	52.5	55	57.5	60	62.5	65

Colours: black, white, charcoal





# Evolution

THE EVOLUTION SHIRT - WOMENS (WTEL)

65% polyester 35% cotton poplin | Classic fit | One piece collar  
| Concealed plaquet | Shaped body detailing front and back  
| Long sleeves | Double buttoned cuffs | Contoured hemline

Sizes:	8	10	12	14	16	18	20	22
½ chest (cm):	47.5	50	52.5	55	57.5	60	62.5	65

Colours: black, white

 standard



# Traveller

THE TRAVELLER SHIRT - WOMENS (WTV)

55% cotton 45% polyester poplin | Crease resistant | Fashion collar  
| Shaped body detailing front and back | Long sleeves | Single  
button cuffs | Contoured hemline

Sizes:	8	10	12	14	16	18	20	22
½ chest (cm):	47.5	50	52.5	55	57.5	60	62.5	65

Colour: black

 standard







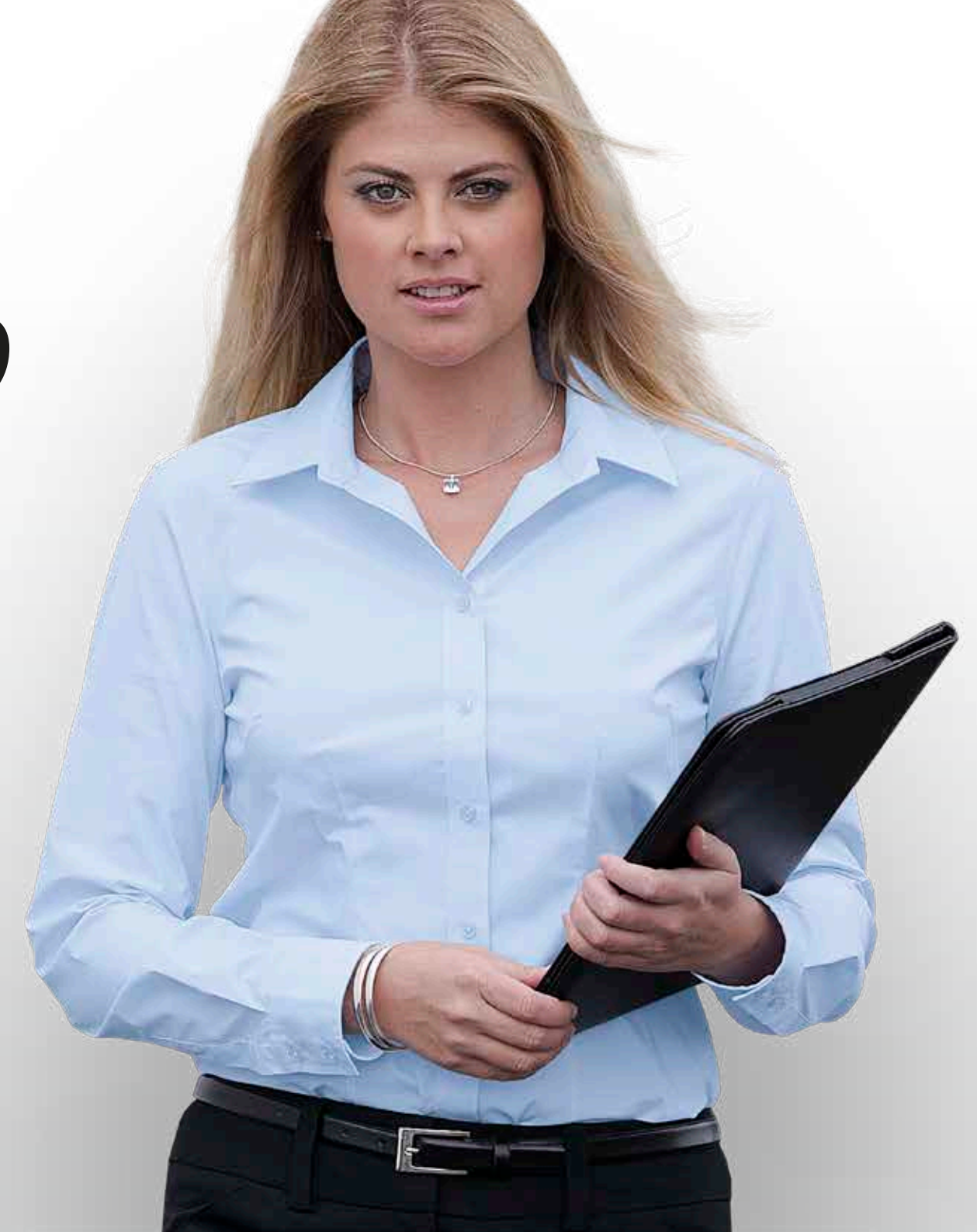
# Milano

## THE MILANO SHIRT - WOMENS (WTMO)

52% cotton 45% polyester 3% elastane stretch fabric |  
Crease resistant | Tapered fit | Fashion collar | Long sleeves  
| Shaped body detailing front and back | Contoured hemline

Sizes: 8 10 12 14 16 18 20 22  
 $\frac{1}{2}$  chest (cm): 45.5 48 50.5 53 55.5 58 60.5 63

Colours: eggshell, pink blush







# Grange

## THE GRANGE SHIRT - MENS (TG)

65% polyester 35% cotton two tone end on end | Tapered fit | Fashion collar | Metal look buttons | Twin loops on shoulders | Buttoned breast pockets | Long sleeve adjustable to  $\frac{3}{4}$  sleeve with sleeve tab

Sizes:	S	M	L	XL	XXL	3XL	5XL
Neck circumference (cm):	40	41	42	43	45	47	51
$\frac{1}{2}$ chest (cm):	54	56.5	59	61.5	64	66.5	71.5

## THE GRANGE SHIRT - WOMENS (WTG)

65% polyester 35% cotton two tone end on end | Tapered fit | Fashion collar | Metal look buttons | Twin loops on shoulders | Buttoned breast pockets | Shaped body detailing front and back | Long sleeve adjustable to  $\frac{3}{4}$  sleeve with sleeve tab | Contoured hemline

Sizes:	8	10	12	14	16	18	20	22
$\frac{1}{2}$ chest (cm):	48	50.5	53	55.5	58	60.5	63	65.5

Colour: indigo

 iStandard







# Protocol

## THE PROTOCOL SHIRT - MENS (TPL)

68% cotton 30% nylon 2% elastane stretch fabric | Tapered fit | Fashion collar | Metal look buttons | Epaulettes on shoulders | Buttoned breast pockets | Long sleeve adjustable to  $\frac{3}{4}$  sleeve with sleeve tab

Sizes:	S	M	L	XL	XXL	3XL	5XL
Neck circumference (cm):	40	41	42	43	45	47	51
$\frac{1}{2}$ chest (cm):	54	56.5	59	61.5	64	66.5	71.5

## THE PROTOCOL SHIRT - WOMENS (WTPL)

68% cotton 30% nylon 2% elastane stretch fabric | Tapered fit | Fashion collar | Metal look buttons | Epaulettes on shoulders | Shaped body detailing front and back | Buttoned breast pockets |  $\frac{3}{4}$  sleeve adjustable to short sleeve with sleeve tab | Contoured hemline

Sizes:	8	10	12	14	16	18	20	22
$\frac{1}{2}$ chest (cm):	45.5	48	50.5	53	55.5	58	60.5	63

Colour: black

the standard





# Montreal

**THE MONTREAL CHAMBRAY SHIRT - WOMENS (WTMC)**  
100% cotton chambray | Tapered fit | V style open neck with fashion collar | Long Sleeves | Shaped body detailing front and back | Contoured hemline | Contrast stitching

Sizes:	8	10	12	14	16	18	20	22	24
½ chest (cm):	48	50.5	53	55.5	58	60.5	63	65.5	68

Colour: charcoal



# Limited Teflon



**THE LIMITED TEFLON® SHIRT - MENS (TL)**  
65% polyester 35% cotton poplin treated with DuPont™ Teflon® | Tapered fit | Fashion collar | Single breast pocket | Short sleeves

Sizes:	S	M	L	XL	XXL	3XL	5XL
Neck circumference (cm):	40	41	42	43	45	47	51
½ chest (cm):	55	57.5	60	62.5	65	67.5	72.5

Colour: white

**THE LIMITED TEFLON® SHIRT - WOMENS (WTL)**  
65% polyester 35% cotton poplin treated with DuPont™ Teflon® | Classic fit | Fashion collar | Shaped body detailing front and back | Two breast pockets | Short sleeves | Contoured hemline

Sizes:	8	10	12	14	16	18	20	22
½ chest (cm):	47.5	50	52.5	55	57.5	60	62.5	65

Colours: black, white



Repels water  
& oil based spills



THE REPUBLIC SHORT SLEEVE SHIRT - MENS (TRSS)

65% polyester 35% cotton bias stripe twill yarn dyed | Tapered fit | Casual fashion collar | Single breast pocket | Short sleeves | Side splits on straight hem

Sizes:	S	M	L	XL	XXL	3XL	5XL
Neck circumference (cm):	40	41	42	43	45	47	51
½ chest (cm):	55	57.5	60	62.5	65	67.5	72.5

THE REPUBLIC SHORT SLEEVE SHIRT - WOMENS (WTRSS)

65% polyester 35% cotton bias stripe twill yarn dyed | Tapered fit | Casual fashion collar | Shaped body detailing front and back | Short sleeves | Contoured hemline

Sizes:	8	10	12	14	16	18	20
½ chest (cm):	47.5	50	52.5	55	57.5	60	62.5

Colour: black

Republic  
Short Sleeve



Omega  
Stripe

THE OMEGA STRIPE SHORT SLEEVE SHIRT - MENS (TOSS)

65% polyester 35% cotton yarn dyed multi stripe | Tapered fit | Fashion collar | Short sleeves | Single breast pocket

Sizes:	S	M	L	XL	XXL
Neck circumference (cm):	40	41	42	43	45
½ chest (cm):	54	56.5	59	61.5	64

Colour: black/white/charcoal

the standard







Repels water  
& oil based spills



# Matrix Teflon

## THE MATRIX TEFLON® SHIRT - MENS (TMT)

65% polyester 35% cotton poplin treated with DuPont™ Teflon® | Classic fit | Contrast piping detail | Casual shirt collar | Single breast pocket | Short sleeves | Side splits on straight hem

Sizes:	S	M	L	XL	XXL	3XL	5XL
Neck circumference (cm):	39	41	43	45	47	49	53
½ chest (cm):	59	61	63	65	67	69	73

## THE MATRIX TEFLON® SHIRT - WOMENS (WTMT)

65% polyester 35% cotton poplin treated with DuPont™ Teflon® | Classic fit | Contrast piping detail | Casual shirt collar | Short sleeves | Side splits on straight hem

Sizes:	8	10	12	14	16	18	20	22
½ chest (cm):	47.5	50	52.5	55	57.5	60	62.5	65

Colours: navy/white, ocean/navy, black/white



# Choosing The Perfect Shirt

Our wide range of men's and women's woven shirts offer you a selection of his and her styles to create your working wardrobe. The Standard + Barkers offers coordinating colour pallets to create a cohesive, well tailored look for your business uniform.



TMT, WTMT: NAVY/WHITE  
PAGE 72



TG, WTG: INDIGO  
PAGE 64



BBR, WBBR: DENIM MARL  
PAGE 2



EOE, WEOE: FRENCH BLUE  
PAGE 44



BFCS, WBFCS NAVY/WHITE  
PAGE 20



TSC: NAVY/WHITE  
PAGE 40



THC, WTHC: NAVY/WHITE  
PAGE 32



TBT, WTBT: STEEL NAVY  
PAGE 42



TKC, WTKC: NAVY/WHITE  
PAGE 30



BSC, WBSC: NAVY/BLUE/WHITE  
PAGE 12



TIC, WTIC: FRENCH BLUE/WHITE  
PAGE 26



WES: BLUE/WHITE  
PAGE 50



TMT, WTMT: OCEAN/NAVY  
PAGE 72



BQU, WBQU: COBALT BLUE  
PAGE 14



BCL, WBCL: FRENCH BLUE  
PAGE 22



TF, WTF: WHITE/NAVY  
PAGE 36



TCDH, WTCDH: WHITE/NAVY/BROWN  
PAGE 38



BHC, WBHC: SKY BLUE/WHITE  
PAGE 18



TNP, WTNP: BLUE/WHITE  
PAGE 28



TU, WTU: BLUE/WHITE  
PAGE 46



BLC, WBLC: WHITE/BLUE  
PAGE 16



TBC, WTBC: SKY/WHITE  
PAGE 34



BMA, WBMA: LIGHT/BLUE  
PAGE 4



WTMO: EGGSHELL  
PAGE 62



BOR, WBOR: WHITE  
PAGE 6



WTCL: WHITE  
PAGE 60



TRLS, WTRLS: WHITE  
PAGE 58



TE, WTE: WHITE  
PAGE 56



TL, WTL: WHITE  
PAGE 69



BTY, WBTY: BLACK  
PAGE 8



TPL, WTPL: BLACK  
PAGE 66



TRLS, WTRLS: BLACK  
PAGE 58



WTV: BLACK  
PAGE 61



WTCL: BLACK  
PAGE 60



TE, WTE: BLACK  
PAGE 56





TMT, WTMT: BLACK/WHITE  
PAGE 72



WTL: BLACK  
PAGE 69



TRSS, WTRSS: BLACK  
PAGE 70



TOSS: BLACK/WHITE/CHARCOAL  
PAGE 71



THC, WTHC: BLACK/WHITE  
PAGE 32



TWS, WTWS: BLACK/WHITE  
PAGE 48



TKC, WTKC: BLACK/WHITE  
PAGE 30



TF, WTF: WHITE/BLACK  
PAGE 36



BNO, WBNO: GREY  
PAGE 24



EOE, WEEO: CHARCOAL  
PAGE 44



WTRL: CHARCOAL  
PAGE 58



WTMC: CHARCOAL  
PAGE 68



ES, WES: GREY/WHITE  
PAGE 50



TU, WTU: SILVER/WHITE  
PAGE 46



BOC, WBOC: TAN/BLACK/IVORY  
PAGE 10



WTMO: PINK BLUSH  
PAGE 62



TKC, WTKC: RED/WHITE  
PAGE 30



TKC, WTKC: GREEN/WHITE  
PAGE 30

# Size Specifications

Throughout our catalogue you will find products available in Classic Fit or Tapered Fit styles, allowing you to choose the right fit for you. We offer a wide range of sizes for both Men and Women. Refer to the garment measurement guidelines below. Full details are available on the individual garment pages.



**CLASSIC FIT SHIRTS**  
Relaxed looser modern fit



**TAPERED FIT SHIRTS**  
Slightly slimmer silhouette for a more tailored fit

## MEASURING WOMENS SIZES:

Chest: Measure under the arms at the fullest part of the chest

Waist: Measure around the waist at the height the pants are normally worn

## MEASURING MENS SIZES:

Neck: Measure around the base of the neck

Chest: Measure under the arms at the fullest part of the chest

Waist: Measure around the waist at the height the pants are normally worn





